

Badger Creek Cutoff Trail #477



Recreation Opportunity Guide

Distance..... 3.1 miles (one way)
Elevation..... 1550-5450 feet
Snow Free June to October



Trail Highlights: This trail enters the Badger Creek Wilderness Area. This trail offers great views of Mount Hood.

Trail Description: This trail starts at Forest Road 2730-200 and ends at Badger Creek Trail #479. From Forest Road 2730-200, the trail heads west and enters the Badger Creek Wilderness Area. After 1 mile the trail opens and offers great views of Mount Hood. Continue 0.2 mile and cross Tolo Creek. After crossing Tolo Creek, the trail crosses two small streams within 0.4 mile. After crossing the second stream, the trail briefly becomes faint and somewhat hard to follow. From here, continue 1.5 miles to the end of the trail at Badger Creek Trail #479. Hikers can return on this trail to the trailhead or choose to hike Badger Creek Trail #479 northwest towards Badger Lake or southeast towards Post Camp Trail #467.

Regulations & Leave No Trace Information:

- Group size is limited to 12. Stock are counted in the group size. For example, 3 people riding their own horse plus a spare horse in the group for packing would make a group of 7.

Leave No Trace

- Plan Ahead and Prepare: Prepare for extreme weather, hazards and emergencies.
- Travel and Camp on Durable Surfaces: Use established trails and campsites.
- Dispose of Waste Properly: Pack out all trash, leftover food and litter.
- Leave What You Find: Avoid introducing or transporting non-native species.
- Minimize Campfire Impacts: Use established fire rings & keep fires small.
- Respect Wildlife: Control pets at all times.
- Be Considerate of Other Visitors: Avoid loud voices and noises.

For information on **Leave No Trace**, go to www.LNT.org or call 1-800-332-4100

For current trail conditions and more recreation information go to:

<http://www.fs.usda.gov/mthood>

Map and driving directions on next page

Mt. Hood National Forest
16400 Champion Way
Sandy, OR 97055
503-668-1700

Barlow Ranger District
780 NE Court Street
Dufur, Oregon 97021
541-467-2291

The USDA is an equal opportunity provider and employer.

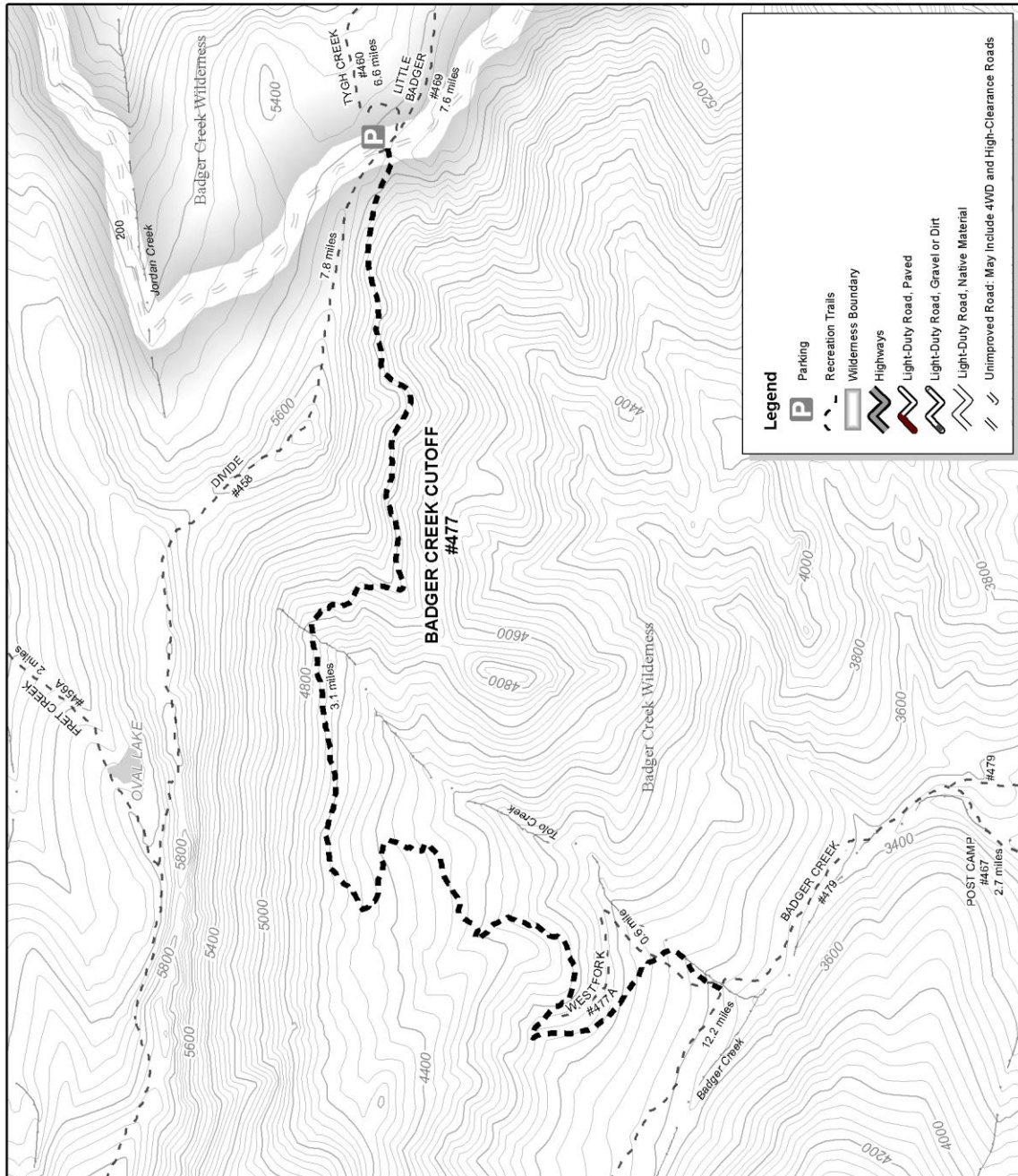
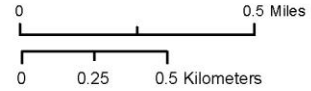


Directions to Trailhead: From Hood River, take OR Hwy 35 south 26 miles, 0.15 mile south of milepost 71, to Dufur Mill Road (Forest Road 44). Turn left (east) on Forest Road 44, go 8 miles to Forest Road 4420 and turn (left) south. Drive 2.1 miles on Forest Road 4420 and take the left fork onto Forest Road 2730. Follow Forest Road 2730 for 3 miles to Forest Road 2730-200. Turn right (south) on Forest Road 2730-200 and travel 2.75 miles to the trailhead.

From Dufur, travel west on Dufur Valley Road (Forest Road 44) for approximately 18 miles to Forest Road 4420. Turn left (south) on Forest Road 4420 and follow the directions above.

477 Badger Creek Cutoff
3.1 miles

5 km



Recommended maps: Barlow Ranger District

