

# Camas Trail #490A



## Recreation Opportunity Guide

Distance..... 2.9 miles (one way)  
Elevation..... 2560-3160 feet  
Snow Free ..... April to October



**Trail Highlights:** This trail has great views of the White River Canyon and Mount Hood. This trail is especially nice in the spring and fall months.

**Trail Description:** This trail follows Camas Creek and Clear Creek from Camas Prairie to Keeps Mill Campground. From the Camas Prairie trailhead, the trail leaves a meadow and heads east into thick ponderosa pine. Approximately 1.2 miles from the trailhead, the trail climbs a short, steep hill to Forest Road 2120-240. Cross the paved road and continue 1.75 miles to Forest Road 2120. Cross Forest Road 2120 and continue 0.35 mile to the upper trailhead at Keeps Mill Campground.

## Regulations & Leave No Trace Information:

### Leave No Trace

- Plan Ahead and Prepare: Prepare for extreme weather, hazards and emergencies.
- Travel and Camp on Durable Surfaces: Use established trails and campsites.
- Dispose of Waste Properly: Pack out all trash, leftover food and litter.
- Leave What You Find: Avoid introducing or transporting non-native species.
- Minimize Campfire Impacts: Use established fire rings & keep fires small.
- Respect Wildlife: Control pets at all times.
- Be Considerate of Other Visitors: Avoid loud voices and noises.

For information on **Leave No Trace**, go to [www.LNT.org](http://www.LNT.org) or call 1-800-332-4100

For current trail conditions and more recreation information go to:

<http://www.fs.usda.gov/mthood>

Map and driving directions on next page

Mt. Hood National Forest  
16400 Champion Way  
Sandy, OR 97055  
503-668-1700

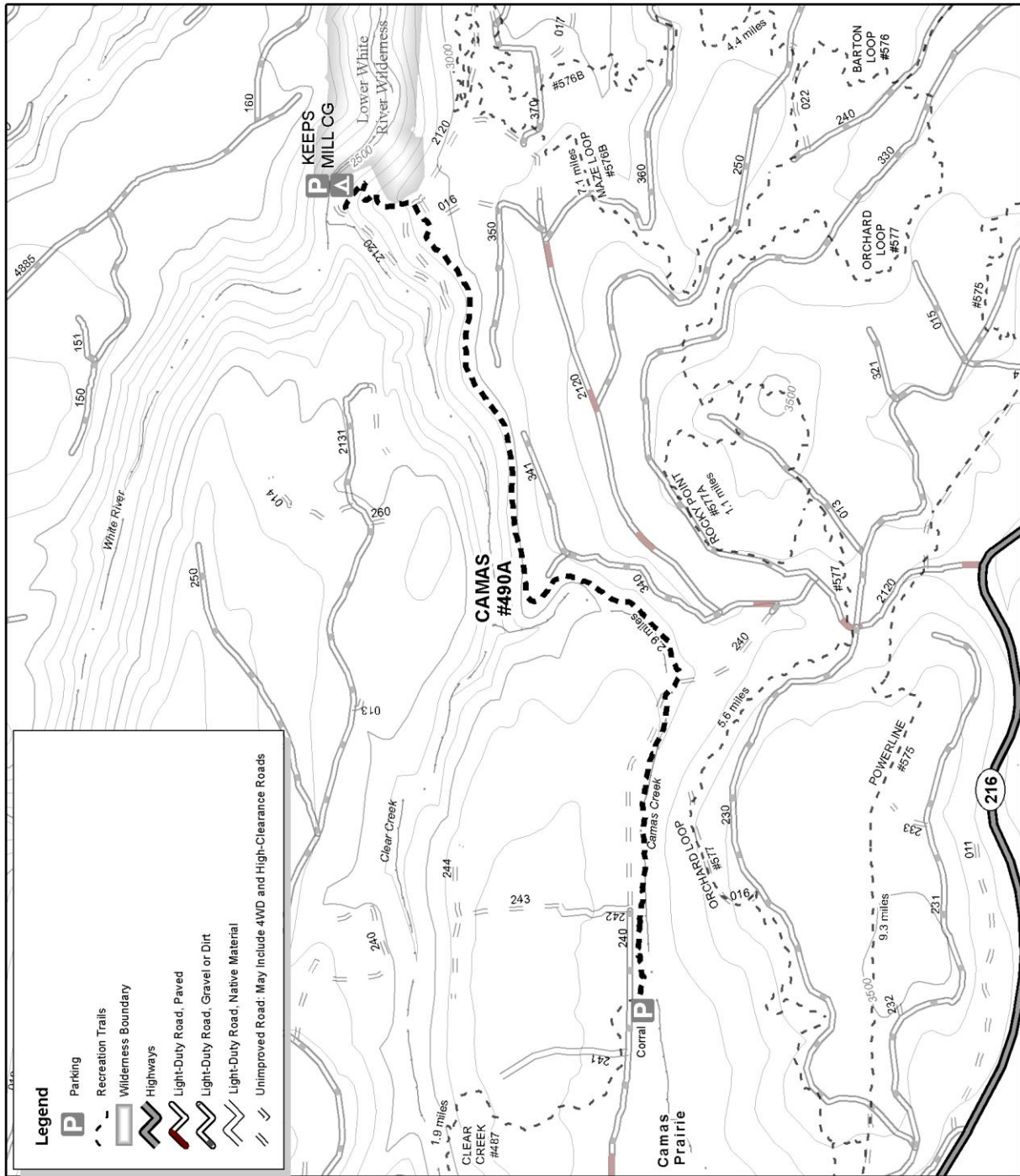
Barlow Ranger District  
780 NE Court Street  
Dufur, Oregon 97021  
503-467-2291



**Directions to Trailhead:** From Portland, take US Hwy 26 45 miles east of Sandy to OR Hwy 216. Go east on OR Hwy 216 for 3.5 miles to Forest Road 2120. Turn left (north) and follow paved Forest Road 2120 1 mile to the junction with Forest Road 240. Turn left (west) on Forest Road 240 (pavement ends shortly) for 1.2 miles to the trailhead at Camas Prairie (there is a corral just west of the trailhead). Off-road parking is available.

490A Camas  
2.9 miles

4.7 km



**Recommended maps:** Barlow Ranger District



Delete this page

