

Huxley Lake Trail #521



Recreation Opportunity Guide

Distance..... 2.9 miles (one way)
Elevation..... 2440-3960 feet
Snow Free June to November



More Difficult



Trail Highlights: This trail enters the Roaring River Wilderness. The trail offers access to Huxley Lake.

Trail Description: This trail begins at Corral Springs Trail #507 (3,960') and ends at Forest Road 4611 (2,440'). From Lookout Springs, head south on Corral Springs Trail #507 for approximately 0.4 mile to the beginning of this trail (#521). Turn right (southwest) on this trail. The trail heads downhill and after 1.1 miles the trail intersects an old road, now a trail. Continue heading southwest 0.8 mile to the spur trail to Huxley Lake (approximately 0.1 mile). From the junction, the trail levels and continues southwest 0.4 mile to the junction with a spur trail. The trail turns east-southeast here and continues 0.6 mile to its terminus at Forest Road 4611.

Regulations & Leave No Trace Information:

- Group size is limited to 12. Stock are counted in the group size. For example, 3 people riding their own horse plus a spare horse in the group for packing would make a group of 7.

Leave No Trace

- Plan Ahead and Prepare: Prepare for extreme weather, hazards and emergencies.
- Travel and Camp on Durable Surfaces: Use established trails and campsites.
- Dispose of Waste Properly: Pack out all trash, leftover food and litter.
- Leave What You Find: Avoid introducing or transporting non-native species.
- Minimize Campfire Impacts: Use established fire rings & keep fires small.
- Respect Wildlife: Control pets at all times.
- Be Considerate of Other Visitors: Avoid loud voices and noises.

For information on **Leave No Trace**, go to www.LNT.org or call 1-800-332-4100

For current trail conditions and more recreation information go to:

<http://www.fs.usda.gov/mthood>

Map and driving directions on next page

Mt. Hood National Forest
16400 Champion Way
Sandy, OR 97055
503-668-1700

Clackamas River Ranger District
595 NW Industrial Way
Estacada, Oregon 97023
503-630-6861

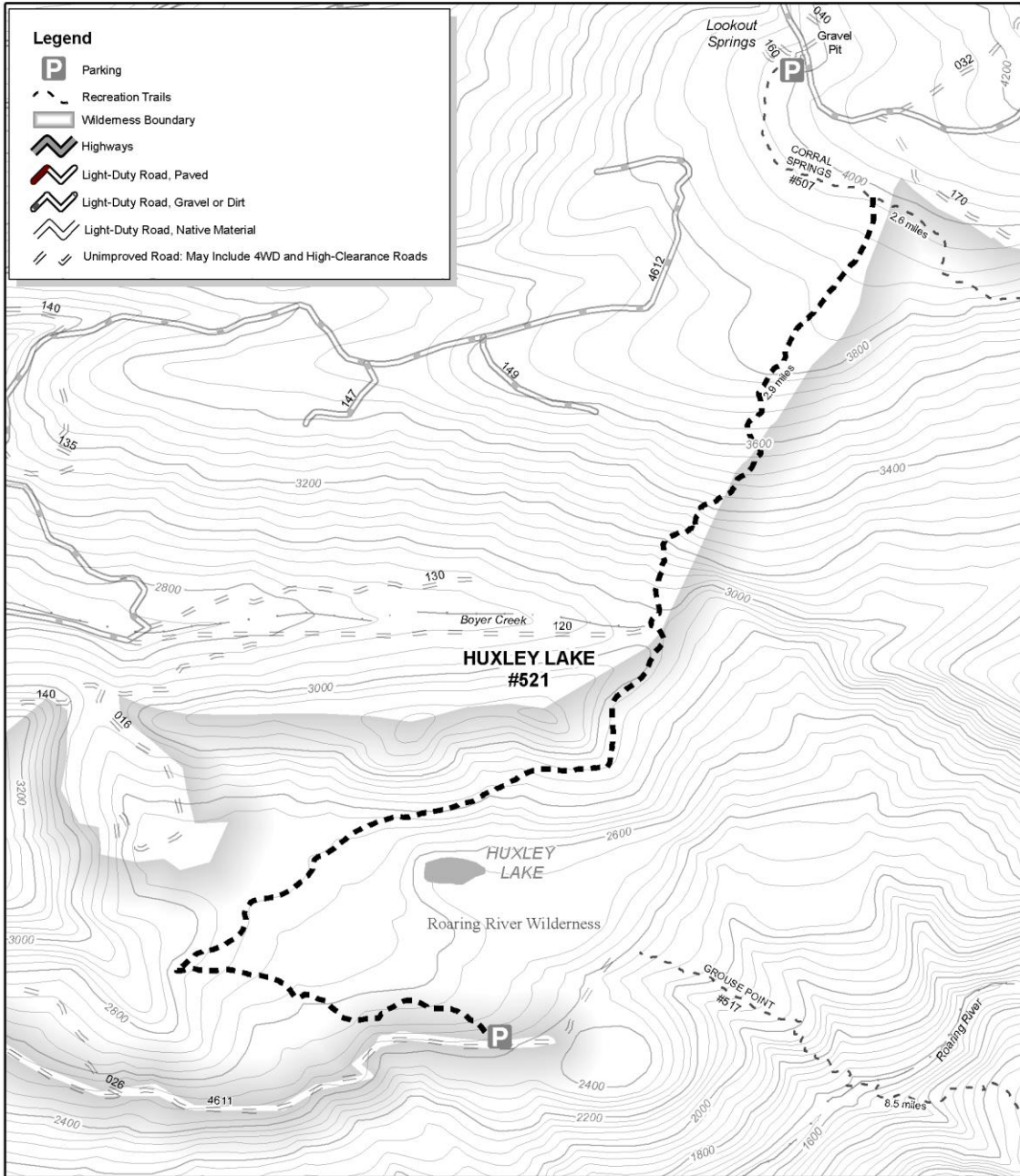
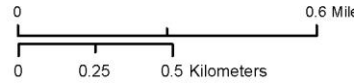
The USDA is an equal opportunity provider and employer.



Directions to Trailhead: From Portland, travel east on US Hwy 26 to Sandy. Turn right (southwest) on OR Hwy 211 and travel 6.1 miles to OR Hwy 224. Turn left (southeast) on OR Hwy 224 and travel 11.8 miles to Abbott Road, Forest Road 4610 across from Promontory Park. Turn left and follow Forest Road 4610 for 12.5 miles to Lookout Springs. The trailhead is on the west side of the parking area. Follow Corral Springs Trail #507 for 0.4 mile to the beginning of this trail.

521 Huxley Lake
2.9 miles

4.7 km



Recommended maps: Clackamas Ranger District

