

# Kinzel Lake Trail #665



## Recreation Opportunity Guide

Distance..... 2.1 miles (one way)  
Elevation..... 2800-4500 feet  
Snow Free ..... June to November



**Trail Highlights:** This trail lies in the eastern end of the Salmon Huckleberry Wilderness. It travels between the lush river bottom of Salmon River and the dry ridge top of Hunchback Mountain.

**Trail Description:** This trail can be accessed from either end. The southern end begins at the junction with the Salmon River Trail #742 and the northern end begins at Kinzel Lake. A short spur trail ¼ mile south of Sherar Burn Road (Forest Road 2613) leads to Kinzel Lake and a small primitive campground with facilities including pit toilets, fireplaces and picnic tables. For a 14.5 mile loop, at the end of this trail, go right (northwest) at Salmon River Trail #742 for 5.6 miles to Green Canyon Campground. Find the trailhead for Green Canyon Way Trail #793A on the east side of the campground. Go east on Green Canyon Way Trail #793A for 3.2 miles to Hunchback Trail #793. Go right (southeast) at Hunchback Trail #793 for 3.6 miles to return to the Kinzel Lake trailhead.

### Regulations & Leave No Trace Information:

- Group size is limited to 12. Stock are counted in the group size. For example, 3 people riding their own horse plus a spare horse in the group for packing would make a group of 7.

#### Leave No Trace

- Plan Ahead and Prepare: Prepare for extreme weather, hazards and emergencies.
- Travel and Camp on Durable Surfaces: Use established trails and campsites.
- Dispose of Waste Properly: Pack out all trash, leftover food and litter.
- Leave What You Find: Avoid introducing or transporting non-native species.
- Minimize Campfire Impacts: Use established fire rings & keep fires small.
- Respect Wildlife: Control pets at all times.
- Be Considerate of Other Visitors: Avoid loud voices and noises.
- 

For information on **Leave No Trace**, go to [www.LNT.org](http://www.LNT.org) or call 1-800-332-4100

**For current trail conditions and more recreation information go to:**

<http://www.fs.usda.gov/mthood>

Map and driving directions on next page

Mt. Hood National Forest  
16400 Champion Way  
Sandy, OR 97055  
503-668-1700

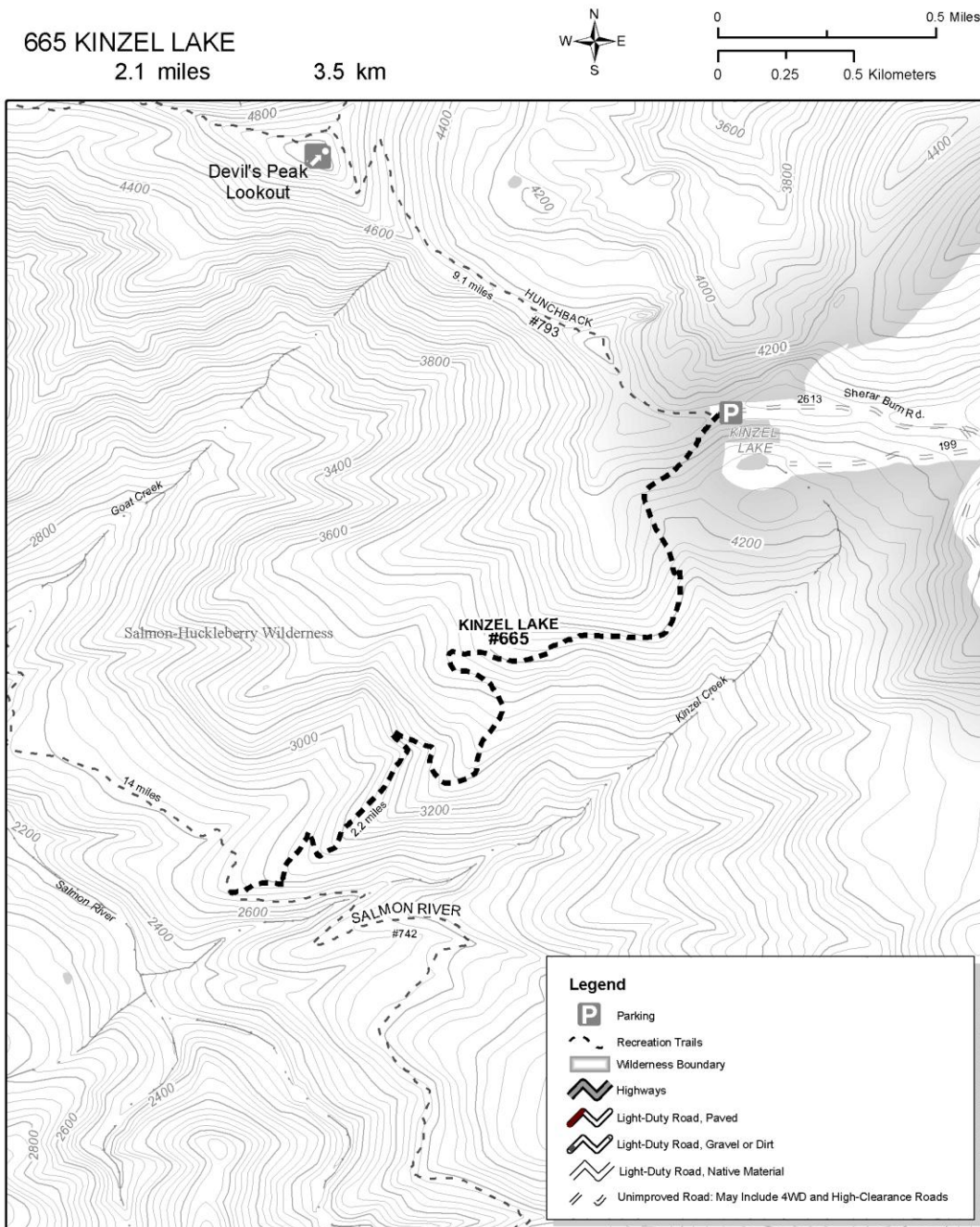
Zigzag Ranger District  
70220 E. Highway 26  
Zigzag, Oregon 97049  
503-622-3191

The USDA is an equal opportunity provider and employer.



**Directions to Trailhead:** To access the southern end from Portland, travel 17.3 miles east of Sandy on US Hwy 26. Turn right (south) at Salmon River Road and follow it 5 miles to the parking area. The trailhead for Salmon River Trail #742 is on the left (east) side of the road. Follow the Salmon River Trail #742 for 6.1 miles to its junction with the Kinzel Lake Trail.

To access the northern end from Portland, travel 29.5 miles east of Sandy on US Hwy 26. Turn right (south) at Still Creek Campground Road (Forest Road 2650). Drive 1.1 miles and take the 2<sup>nd</sup> right onto E Chimney Rock Road. Travel 0.5 mile and continue onto Kinzel Lake/Sherar Burn Road (Forest Road 2613). Drive 9 miles to the end of Kinzel Lake Road (Forest Road 2613). Parking is at the end of the road. The trail starts at the south side of the road. Forest Road 2613 is a rough, narrow, one lane gravel road with turnouts. It is not recommended for trailers.



**Recommended maps:** Zigzag Ranger District

