

# Top Spur Trail #785

## Recreation Opportunity Guide



Distance..... 0.5 miles (one way)  
Elevation..... 4000-4300 feet  
Snow Free ..... June to November



**Trail Highlights:** This trail accesses the west side of the Mount Hood Wilderness from the Lolo Pass Area. Qualities of the trail itself include wildflowers in June and huckleberries in late August. It is heavily visited.

### Trail Description:

This ½ mile access trail is a short, forested trail heavily used as an access route to the Timberline Trail #600 and the Pacific Crest National Scenic Trail #2000.

### Regulations & Leave No Trace Information:

- Wilderness Permits are required between May 15 and Oct 15.
- Group size is limited to 12. Stock are counted in the group size. For example, 3 people riding their own horse plus a spare horse in the group for packing would make a group of 7.

#### Leave No Trace

- Plan Ahead and Prepare: Prepare for extreme weather, hazards and emergencies.
- Travel and Camp on Durable Surfaces: Use established trails and campsites.
- Dispose of Waste Properly: Pack out all trash, leftover food and litter.
- Leave What You Find: Avoid introducing or transporting non-native species.
- Minimize Campfire Impacts: Use established fire rings & keep fires small.
- Respect Wildlife: Control pets at all times.
- Be Considerate of Other Visitors: Avoid loud voices and noises.

For information on **Leave No Trace**, go to [www.LNT.org](http://www.LNT.org) or call 1-800-332-4100

**For current trail conditions and more recreation information go to:**

<http://www.fs.usda.gov/mthood>

Map and driving directions on next page

Mt. Hood National Forest  
16400 Champion Way  
Sandy, OR 97055  
503-668-1700

Zigzag Ranger District  
70220 E. Highway 26  
Zigzag, Oregon 97049  
503-622-3191

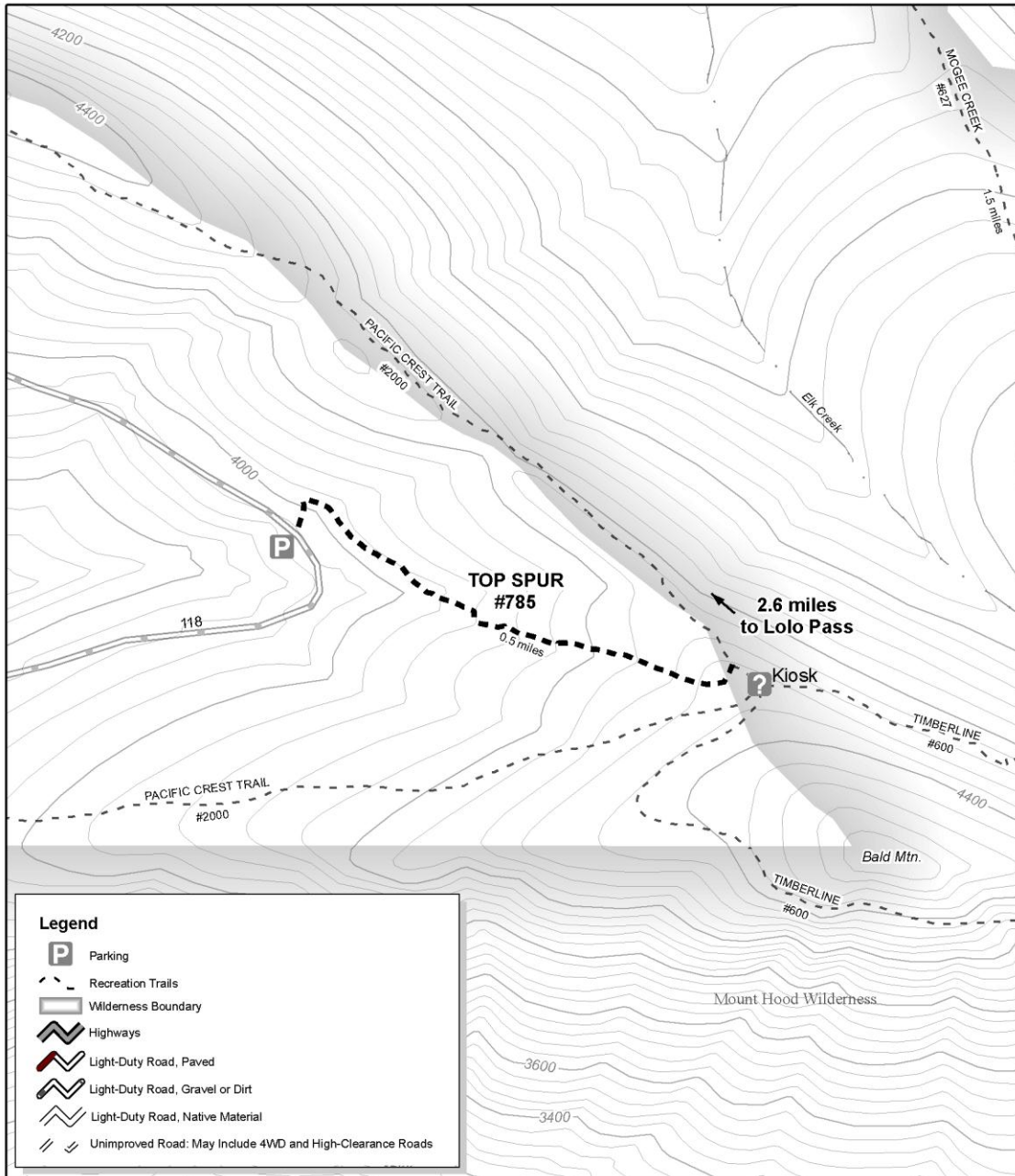
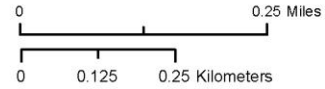
The USDA is an equal opportunity provider and employer.



**Directions to Trailhead:** From Portland, take US Hwy 26 17.5 miles east of Sandy and turn left at E Lolo Pass Road (Forest Road 18) and travel 4 miles. Turn right at Forest Road 1825 and travel 0.7 mile. Continue straight onto Forest Road 1828 for 5.6 miles beyond turnoff to Riley Campground and Lost Creek Campground. Keep right at the fork and continue onto graveled Forest Road 1828-118. Drive 1.6 miles to the trailhead on your right.

785 TOP SPUR  
0.5 miles

0.7 km



**Recommended maps:** Zigzag Ranger District

