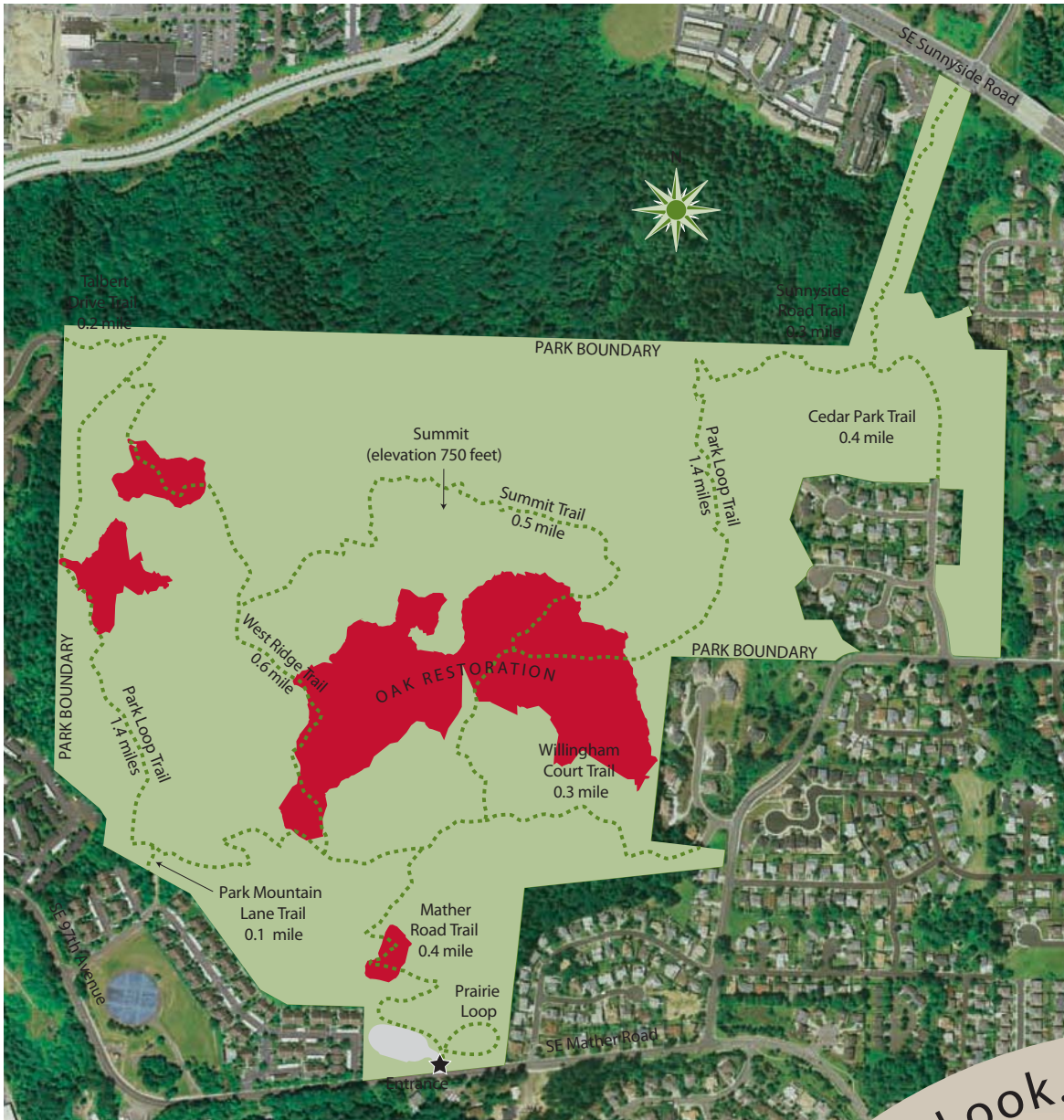


# Mount Talbert Nature Park



Location:  
The park is just east of I-205 and south of Southeast Sunnyside Road. From Sunnyside Road turn south on 97th which becomes Mather Road. The park entrance is on the left off of Mather.

You can hike 4.2 miles of trails through 200 acres of conifer and streamside forests, oak woodlands and prairie in Mount Talbert Nature Park.

The park is open daily from half an hour before sunrise until half an hour after sunset. Dogs and bikes are not permitted.

For more information, call North Clackamas Parks and Recreation District at 503-794-8041.

Stop... Look... Listen



Nature parks like Mount Talbert provide raccoons with places to forage other than your backyard.

## Where's the Wildlife?

Wildlife is all around you at Mount Talbert. Walk and speak quietly, listen carefully and use your relaxed, peripheral vision to spot the small movements of animals.

Western gray squirrels are alerted to humans up to a quarter mile away by warning calls from birds.

Washington Department of Fish and Wildlife photos

