



Hood Canal

#### Jefferson Transit Bike Racks

All buses are provided with a bike rack that holds up to at least two bicycles, available on a first-come, first-served basis. Jefferson Transit connects with Clallam Transit which also has bike racks on its buses.

360/385-4777

800/371-0497

www.jeffersontransit.com

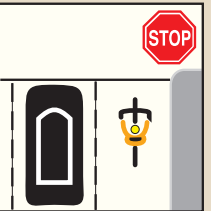
#### Hood Canal Bridge

USE CAUTION WHEN CROSSING THE BRIDGE.  
Strong winds can make for dangerous conditions.

SR 104 to Kingston/Edmonds ferry &  
SR 3 to Bainbridge Island & points south

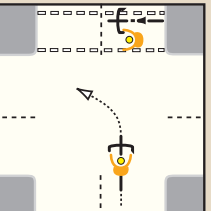
## SAME ROADS • SAME RIGHTS • SAME RULES

Be Visible • Be Alert • Wear a Helmet • Have Fun



RCW 46.61.755 states:  
**Traffic laws apply to persons riding bicycles.**

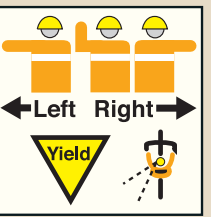
Obey all traffic signs, signals and laws. Ride in the same direction as traffic.



Choose the best way to turn left:

■ LIKE a CAR—scan behind, yield, signal and when safe, move into the left lane and turn left.

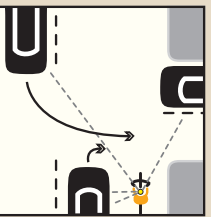
■ LIKE a PEDESTRIAN—dismount and walk your bike across the intersection in the crosswalk.



Signal before turns and lane changes.

Check behind and ahead before turning.

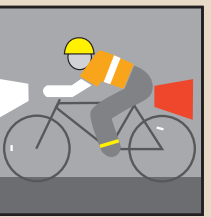
Yield to vehicles with the right-of-way.



Ride defensively. Be aware of other vehicles.

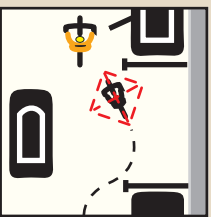
Do not pass on the right.

**CAUTION:** Always watch for cars stopping or turning.



Be visible day or night.  
Wear bright clothes.

RCW 46.61.780 states:  
**At night you must have a headlight and taillight or red rear reflector.**



Ride predictably.

Leave adequate space between you and parked cars.

Be careful of opening car doors.

Do not weave in and out of parked cars and traffic.

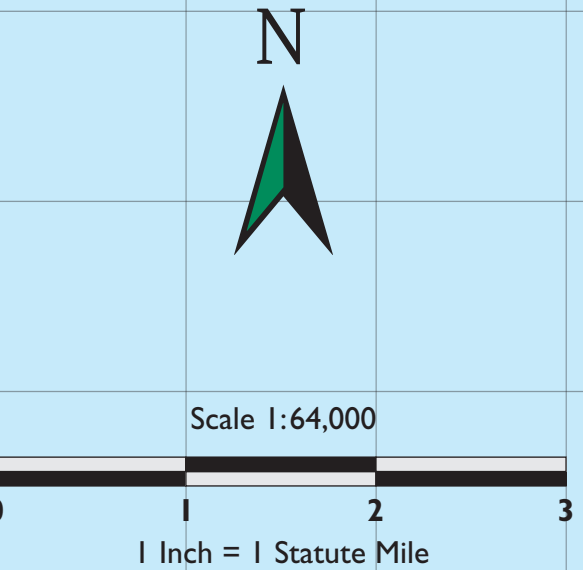


Be courteous.

Audibly alert pedestrians as you approach.

Yield to pedestrians in the crosswalk.

© 2005–2013  
Port Townsend Bicycle Association  
P.O. Box 681 Port Townsend, WA 98368  
www.ptbikes.org  
Printed August 2013



### Map Legend

4ft + Shoulder	2ft to 4ft Shoulder	No Shoulder	Low Traffic
Caution Area: narrow roads, poor visibility or no shoulders			

Olympic Discovery Trail:	Off-road	On-Road	
Gravel Road	Roads Not Classified		
Mountain Bike Trail	Powerlines		
Forest Roads	Stream		

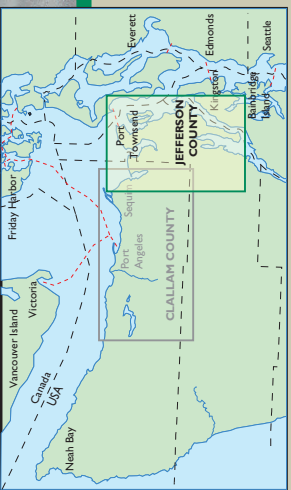
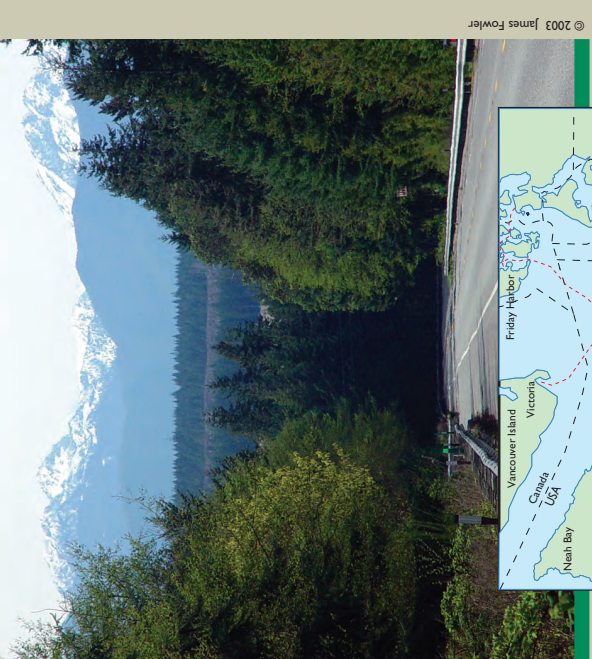
NOTE: The legend indicates general conditions, actual conditions and shoulder widths may vary unexpectedly.

	State Route		Visitor Information
	US Highway		Restrooms
	Hill		Hospital
	Steep Hill		Parking
	Narrow Bridge		Campsite
	Viewpoint		Hostel
	Grocery/Foodmart		Airport
	Bike Shop		Rural Bus Route
	Golf Course		Boat Launch
	School		Off-Road Bike Trails

Port Townsend Bicycle Association and the project partners disclaim responsibility for any injury, loss or damage suffered due to reliance on this map. No warranty or guarantee, expressed or implied, is made as to the suitability of trail or road conditions for walking or bicycling or any other activity.

## Bicycling the Olympic Peninsula

EASTERN JEFFERSON COUNTY



Discover the Peninsula!

Discover the excellent road  
and mountain bike cycling the  
Peninsula has to offer.

This map is intended to familiarize cyclists with the many great cycling opportunities on the Olympic Peninsula and to provide information to cyclists so that they can make their own decisions as to which route is suited for their skill level.

Please be respectful and courteous to all trail users. We thank the following partners for helping produce this map series:

Port Townsend Bicycle Association, Jefferson County, Clallam County and the many local cyclists who contributed their knowledge of the roadways and trails. Thanks to the Peninsula Regional Transportation Planning Organization for their support. This project was initially funded by a FHWA grant.

Send comments and suggestions to: Port Townsend Bicycle Association, P.O. Box 681, Port Townsend, WA 98368  
www.ptbikes.org email: bikemaps@ptbikes.org

Check our website for additional information, local trail maps and local links: www.ptbikes.org

Thanks to the Jefferson County Tourism Coordinating Council, North Hood Canal Chamber of Commerce and PTBA for funding the fourth edition of this map, and the Broken Spoke bike shop for collecting donations.

Membership in the Port Townsend Bicycle Association supports cycling in Port Townsend and eastern Jefferson County—dedicated to promoting bicycling through educational, recreational and sporting events—join and you too can help make the Northwest a better place for bicycling.

Cartography & Map Design  
David McCulloch 360-385-3912  
Graphic Design  
Cynthia Graphic Design 360-385-2549