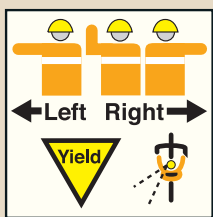
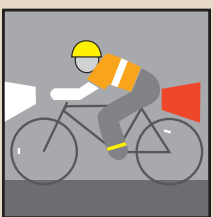


RCW 46.61.755 states:
Traffic laws apply to persons riding bicycles.
Obey all traffic signs, signals and laws. Ride in the same direction as traffic.



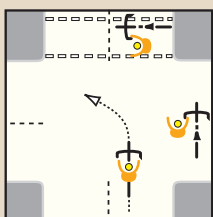
Signal before turns and lane changes.
Check behind and ahead before turning.
Yield to vehicles with the right-of-way.



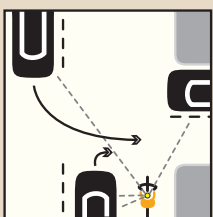
Be visible day or night.
Wear bright clothes.
RCW 46.61.780 states:
At night you must have a white headlight and taillight or red rear reflector.



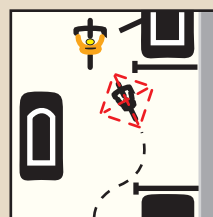
Be courteous.
Audibly alert pedestrians as you approach.
Yield to pedestrians in the crosswalk.



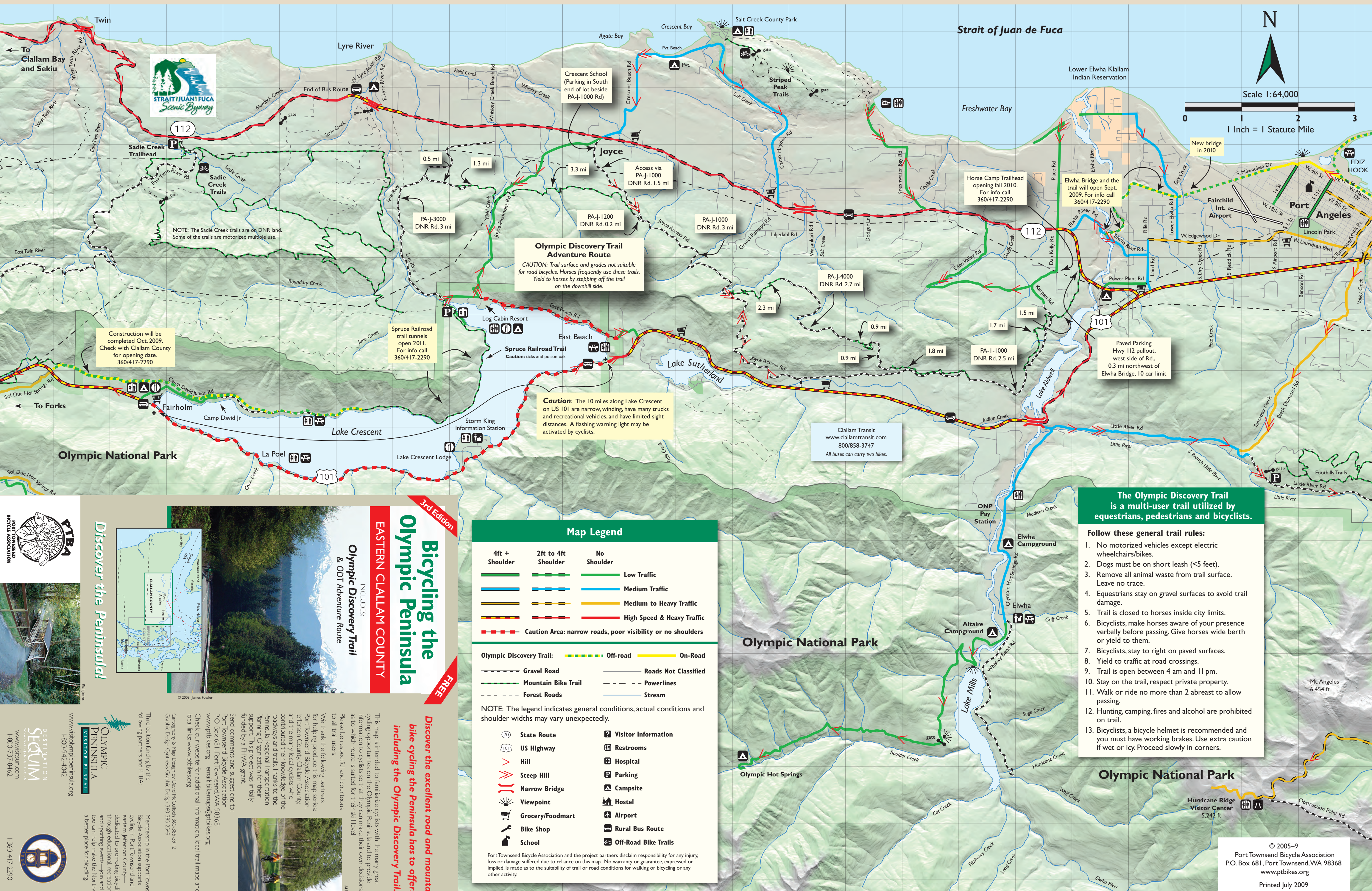
Choose the best way to turn left:
■ LIKE a CAR—scan behind, yield, signal and when safe, move into the left lane and turn left.
■ LIKE a PEDESTRIAN—dismount and walk your bike across the intersection in the crosswalk.



Ride defensively. Be aware of other vehicles.
Do not pass on the right.
CAUTION: Always watch for cars stopping or turning.



Ride predictably.
Leave adequate space between you and parked cars.
Be careful of opening car doors.
Do not weave in and out of parked cars and traffic.





Discover the Peninsula!



Discover the excellent road and mountain bike cycling the Peninsula has to offer, including the Olympic Discovery Trail.

Includes:
Olympic Discovery Trail
& ODT Adventure Route

3rd Edition

FREE

Discover the excellent road and mountain bike cycling the Peninsula has to offer, including the Olympic Discovery Trail.

Discover the excellent road and mountain bike cycling the Peninsula has to offer, including the Olympic Discovery Trail.

Discover the excellent road and mountain bike cycling the Peninsula has to offer, including the Olympic Discovery Trail.

Map Legend

4ft + Shoulder	2ft to 4ft Shoulder	No Shoulder	Low Traffic
Gravel Road	Mountain Bike Trail	Forest Roads	Roads Not Classified
Powerlines	Stream		

NOTE: The legend indicates general conditions, actual conditions and shoulder widths may vary unexpectedly.

Discover the excellent road and mountain bike cycling the Peninsula has to offer, including the Olympic Discovery Trail.

Discover the excellent road and mountain bike cycling the Peninsula has to offer, including the Olympic Discovery Trail.

Discover the excellent road and mountain bike cycling the Peninsula has to offer, including the Olympic Discovery Trail.

The Olympic Discovery Trail is a multi-user trail utilized by equestrians, pedestrians and bicyclists.

Follow these general trail rules:

- No motorized vehicles except electric wheelchairs/bikes.
- Dogs must be on short leash (<5 feet).
- Remove all animal waste from trail surface. Leave no trace.
- Equestrians stay on gravel surfaces to avoid trail damage.
- Trail is closed to horses inside city limits.
- Bicyclists, make horses aware of your presence verbally before passing. Give horses wide berth or yield to them.
- Bicyclists, stay to right on paved surfaces.
- Yield to traffic at road crossings.
- Trail is open between 4 am and 11 pm.
- Stay on the trail, respect private property.
- Walk or ride no more than 2 abreast to allow passing.
- Hunting, camping, fires and alcohol are prohibited on trail.
- Bicyclists, a bicycle helmet is recommended and you must have working brakes. Use extra caution if wet or icy. Proceed slowly in corners.

Olympic National Park

Olympic National Park

Olympic National Park

Discover the excellent road and mountain bike cycling the Peninsula has to offer, including the Olympic Discovery Trail.

Discover the excellent road and mountain bike cycling the Peninsula has to offer, including the Olympic Discovery Trail.

Discover the excellent road and mountain bike cycling the Peninsula has to offer, including the Olympic Discovery Trail.

Discover the excellent road and mountain bike cycling the Peninsula has to offer, including the Olympic Discovery Trail.

Discover the excellent road and mountain bike cycling the Peninsula has to offer, including the Olympic Discovery Trail.

Discover the excellent road and mountain bike cycling the Peninsula has to offer, including the Olympic Discovery Trail.