

Map Legend *(map on reverse)*

Trailheads



hiking, mountain biking

hiking, horseback riding, mountain biking

Trails

- maintained
- maintained, wide
- unmaintained
- other

- ① trail junction
- 0.24 approximate distance in miles between trail junctions

Facilities

- restrooms
- parking area

Publicly owned land

- King County: Soaring Eagle Regional Park
- other King County park land
- City of Sammamish

Other basemap features

- incorporated city
- unincorporated King County
- wetland
- local street
- water tank
- elevation contour (interval = 50 ft.)

July 2013

Map created by the King County Parks and Recreation Division and the King County GIS Center: www.kingcounty.gov/gis.

Printed on recycled paper.

©2009, 2013 King County, Washington.

The information included on this map has been compiled by King County staff from a variety of sources and is subject to change without notice. King County makes no representations or warranties, express or implied, as to accuracy, completeness, timeliness, or rights to the use of such information. This document is not intended for use as a survey product. King County shall not be liable for any general, special, indirect, incidental, or consequential damages including, but not limited to, lost revenues or lost profits resulting from the use or misuse of the information contained on this map. Any sale of this map or information on this map is prohibited except by written permission of King County.

Soaring Eagle Regional Park

Soaring Eagle Regional Park features 12 miles of trails that are regularly used by hikers, mountain bikers and equestrians. The Pipeline Trail crosses through the park and is wide and flat—in fact, it is quite common to see families with baby strollers out enjoying the trail. Soaring Eagle is also popular for trail running competitions.

King County Parks partners with groups such as Friends of Soaring Eagle, the Boy Scouts, and hiking and biking enthusiasts who volunteer to help us maintain the trails and preserve the park's natural heritage.

Area

600 acres

Total trail length

12 miles

Uses

Hiking, horseback riding, mountain biking; easy walking down the pipeline trail.

Access

The main entry is on the **west side of the park** in Sammamish via 228th Avenue SE and SE 8th Street to the end of East Main Drive where a paved parking lot can accommodate up to five horse trailers. The address is 26015 East Main Drive.

A second entry point is on the **south side of the park** at the end of Trossachs Boulevard via SE Duthie Hill Road. Parking is along Trossachs Boulevard.

A third entry is located on the **northwest corner of the park** via NE 8th Street to 258th Ave NE. There is limited street parking near a retention pond.

Another entry **from the south** is at the Beaver Lake Preserve along West Beaver Lake Drive.

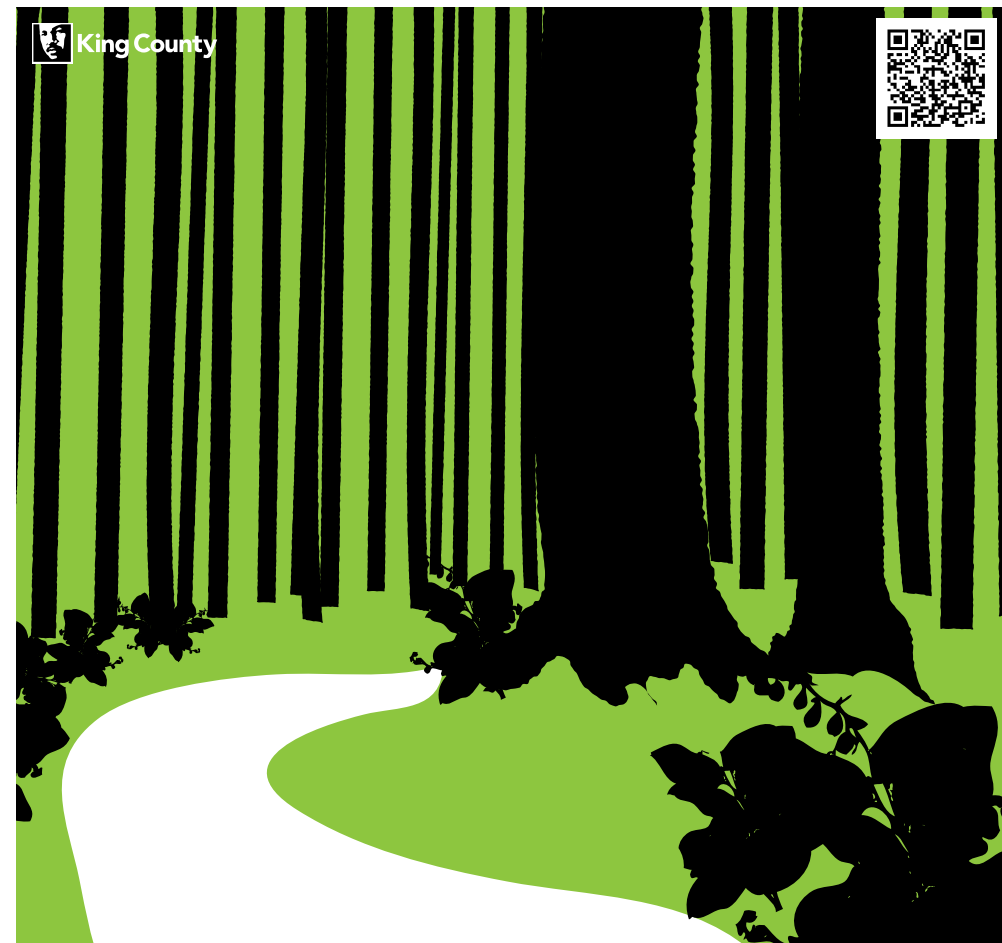
This information is available in alternative formats upon request. Please call 206-296-4232 or 1-800-325-6165 ext. 6-4232. Washington Relay Service: 1-800-833-6388.

For information about King County Parks, please call 206-296-4232.

Visit King County Parks on the Internet at www.kingcounty.gov/parks.



King County

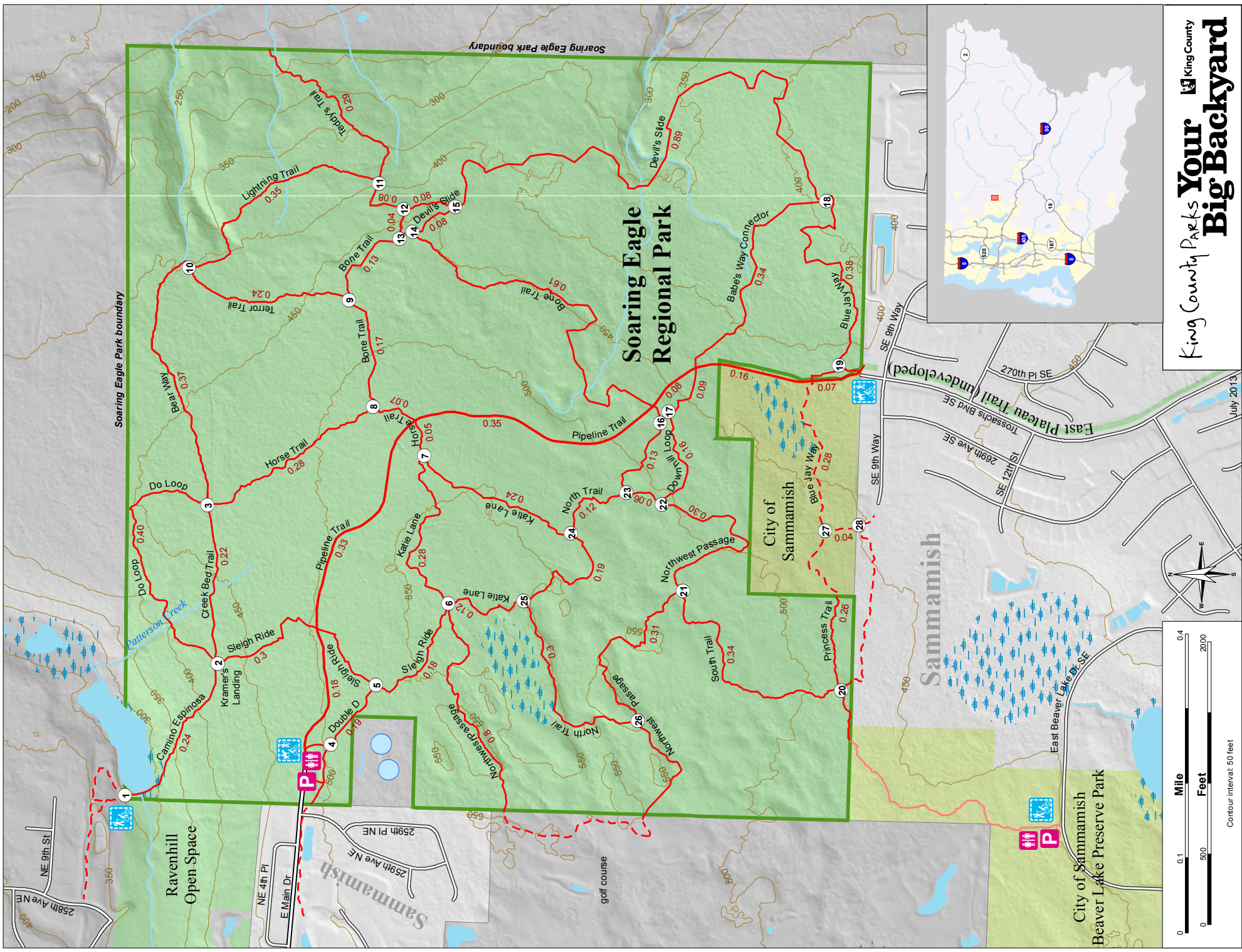


King County Parks **Your Big Backyard**

Soaring Eagle

Welcome to King County Parks' Soaring Eagle Regional Park

Soaring Eagle Regional Park is 600 acres of mature forests and wetlands. Formerly Washington State school trust land known as Section 36, Soaring Eagle sits above Patterson Creek on the edge of the Sammamish Plateau along the western flank of the Snoqualmie River Valley. This natural area provides sanctuary for black bear, bobcat, black tail deer and more than 40 species of birds.



King County Parks **Your Big Backyard** King County

Contour interval: 50 feet

July 2013