

Map Legend *(map on reverse)*

Trailheads



hiking, horseback riding



hiking, horseback riding, mountain biking

Trails



maintained



maintained, seasonal
(closed Oct. 15–Apr. 15)



forest maintenance road



other

0.24

approximate distance in miles
between trail junctions

Facilities



parking area

Publicly owned land



King County park land



other public land



City of Seattle watershed: *public access is allowed on trails only*



City of Seattle watershed: *no public access*

Other basemap features



unincorporated King County



wetland



freeway



arterial street



local street



gate




power line



elevation contour (interval = 50 ft.)

February 2013

Map created by the King County Parks and Recreation Division and the King County GIS Center: www.kingcounty.gov/gis.

Printed on recycled paper. 

©2009, 2013 King County, Washington.

The information included on this map has been compiled by King County staff from a variety of sources and is subject to change without notice. King County makes no representations or warranties, express or implied, as to accuracy, completeness, timeliness, or rights to the use of such information. This document is not intended for use as a survey product. King County shall not be liable for any general, special, indirect, incidental, or consequential damages including, but not limited to, lost revenues or lost profits resulting from the use or misuse of the information contained on this map. Any sale of this map or information on this map is prohibited except by written permission of King County.

Taylor Mountain Forest

The extensive trail system at Taylor Mountain Forest is used by equestrians, hikers, and mountain bikers. This working forest is intended to demonstrate environmentally sound forest management, protect and restore ecological systems and provide passive recreational opportunities. Taylor Mountain is dominated by mature red alder trees. Trail users will see recent efforts to convert some of the forests from red alder to conifers. Taylor Mountain is home to abundant fish and wildlife, including black bear and cougar. Carey and Holder creeks support spawning coho salmon.

Area

1,822 acres

Total trail length

30 miles

Trail uses

Horseback riding, hiking, and mountain biking. There are excellent views of Mount Rainier from the Holder Knob Trail. Public access to the Cedar River Watershed is allowed on the Elk Ridge Trail.

Access

From Seattle, drive east on I-90 to Issaquah and then south on Issaquah Hobart Road SE. Issaquah Hobart Road passes under SR-18 and becomes 276th Avenue SE. The entrance to the Taylor Mountain parking lot is ¼ mile past SR-18 on the east side of 276th Avenue SE. The parking lot can accommodate trucks with horse trailers.

This information is available in alternative formats upon request. Please call 206-296-4232 or 1-800-325-6165 ext. 6-4232. Washington Relay Service: 1-800-833-6388.

For information about King County Parks, please call 206-296-4232.

Visit King County Parks on the Internet at www.kingcounty.gov/parks.



 King County



King County Parks **Your Big Backyard**

Taylor Mountain

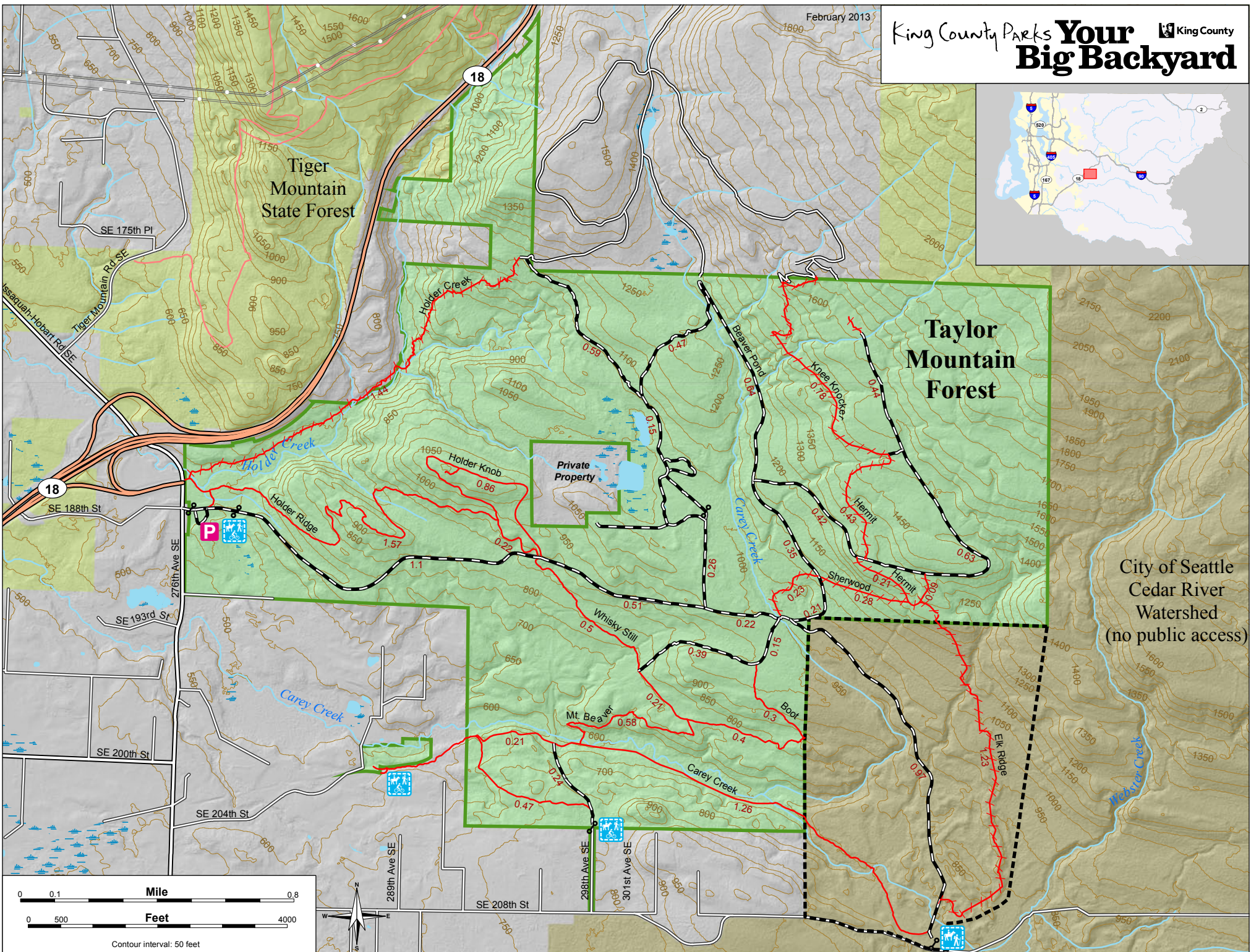
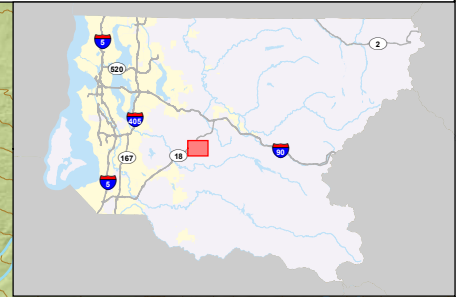
Welcome to King County Parks' Taylor Mountain Forest

Taylor Mountain Forest is located south and east of Tiger Mountain, south of I-90 and east of SR-18, between the communities of Hobart and North Bend in eastern King County. The 1,822-acre site, which offers sweeping views of Mount Rainier, forested wetlands and meadows of wild flowers, provides an important habitat link between the City of Seattle's Cedar River Watershed and Tiger Mountain State Forest.

February 2013

King County Parks **Your Big Backyard**

King County



City of Seattle
Cedar River
Watershed
(no public access)