

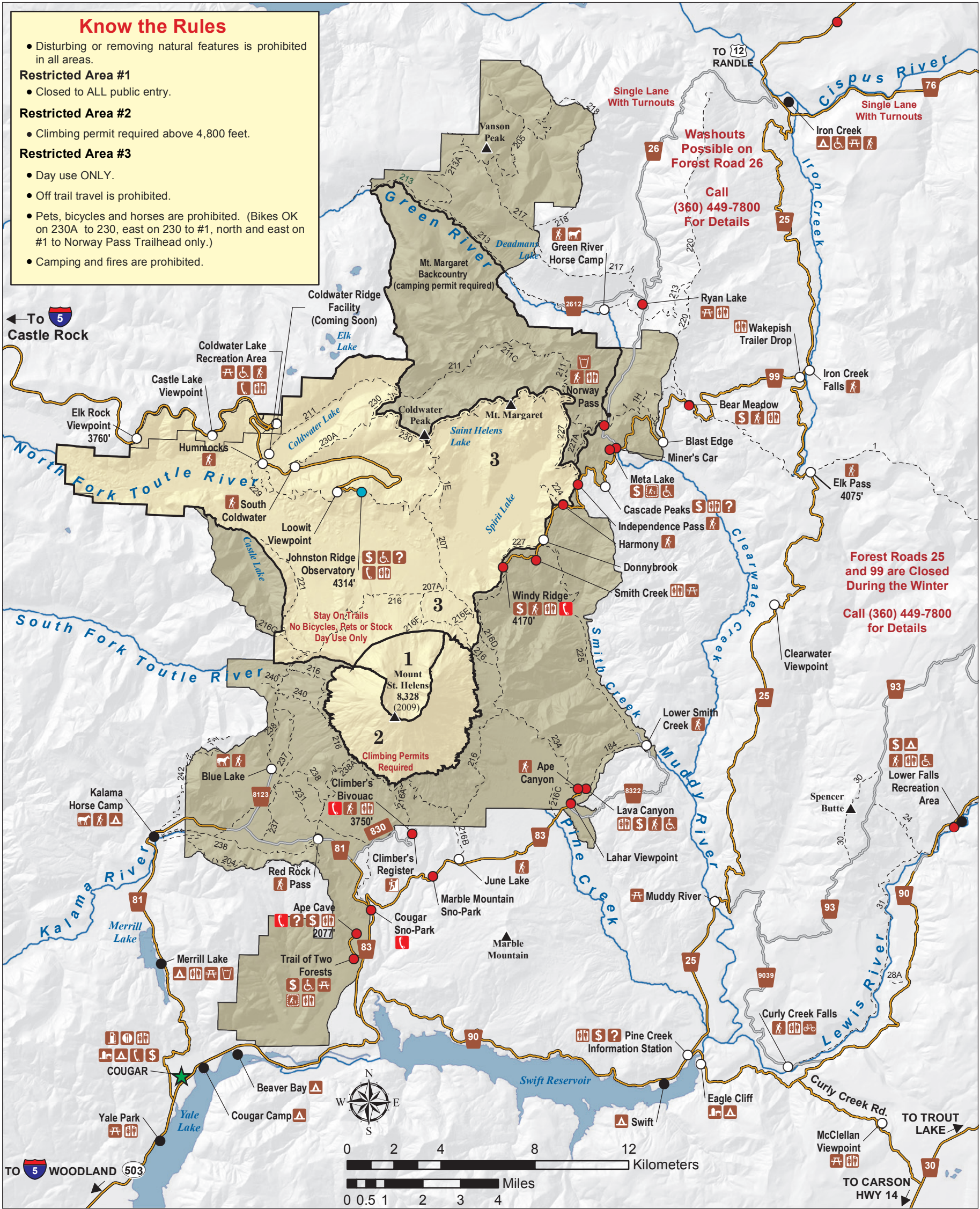


MOUNT ST. HELENS NATIONAL VOLCANIC MONUMENT



Know the Rules

- Disturbing or removing natural features is prohibited in all areas.
- Restricted Area #1**
- Closed to ALL public entry.
- Restricted Area #2**
- Climbing permit required above 4,800 feet.
- Restricted Area #3**
- Day use ONLY.
 - Off trail travel is prohibited.
 - Pets, bicycles and horses are prohibited. (Bikes OK on 230A to 230, east on 230 to #1, north and east on #1 to Norway Pass Trailhead only.)
 - Camping and fires are prohibited.



For updated information:
<http://www.fs.usda.gov/mountstheleens>
or call (360) 449-7800

Elevations are in feet